



SEAMIX

REVOLUTIONIZING THE CONSTRUCTION INDUSTRY

WITH COST-SAVING, SUSTAINABLE
ALTERNATIVE CONCRETE AND REBAR

WWW.MEPWORLDGROUP.COM

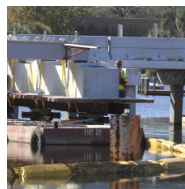
THE SEAMIX® DIFFERENCE

SEAMIX® is an innovative, sustainable, and cost-effective alternative concrete admixture utilizing Basalt and Graphene to achieve optimal results. With the use of Basalt reinforcement, salt water, brackish water, reclaimed water or any other non-potable water will all achieve the same benefits. (Note: This is extremely important in places where freshwater is not readily available.) With drastically improved cure times, construction time can be reduced in half. Freeze-thaw effects are drastically reduced due to the graphene component in SeaMix® and the basalt chopped fibers vastly increase the workability of the concrete as well as add unmatched crack control. Extensive performance tests and exposure to harsh environments have proven SeaMix® exceeds the properties and constructibility of traditional concrete.

- ✓ Ease of Placement
- ✓ High Abrasion Resistance
- ✓ Resistance to Chemical Attack
- ✓ High Early Strength
- ✓ Low Permeability and Diffusion
- ✓ Toughness and Impact Resistance
- ✓ High Modulus of Elasticity
- ✓ High Durability and Long-life in Severe Environments
- ✓ Lower Carbon Footprint Providing LEED Points
- ✓ High-Strength & Volume Stability
- ✓ Inhibition of Bacterial and Mold Growth
- ✓ High Resistance to Frost and Deicer Scaling Damage
- ✓ Compaction Without Segregation

BASALT AND FIBER REINFORCED POLYMER (BFRP) REBAR

Designed to be stronger, lighter, longer-lasting than steel, and resistant to salt and chloride, the volcanic-mined basalt rebar materials are a paradigm shift in the construction industry.



CONSTRUCTION SAVINGS



RESISTANT TO ALKALI CORROSION AND ACIDS



BEST WEIGHT-STRENGTH RATIO



LOWEST CARBON FOOTPRINT



CAN BE USED WITH SALT WATER



MARINE FRIENDLY



NON-TOXIC

SEAMIX® innovation addresses the whole concrete built environment.

SEAMIX® INNOVATION CAN:

<p>180 BILLION</p> <p>Potentially CONSERVE 180 billion gallons of freshwater ANNUALLY</p>	<p>20%</p> <p>REDUCE the CARBON FOOTPRINT from the concrete industry by 20%</p>	<p>70%</p> <p>RE-UTILIZE 70% of the construction and DEMOLITION WASTE</p>
<p>CONSERVE</p> <p>SAVE on the use of non-renewable resources</p>	<p>30%</p> <p>LOWER the cement cost by 30%</p>	<p>2X</p> <p>DOUBLE the lifespan of concrete reinforced structures</p>

THREE HIGH-PERFORMANCE PRODUCTS

ALLOW FOR REDUCED WATER CONSUMPTION AND CORROSION, AND INCREASED DURABILITY

bioCene® proprietary graphene mix offers a lower carbon footprint and provides developers and/or architects the opportunity to access LEED points.

ULTRA 2X:

By way of specialized sizers on basalt fibers and Biocene®, “graphene” along with other nanoparticles increases the compression, shrinkage, workability, strength, and acts as a corrosion inhibitor. In addition, this increases the overall strength of the design mix by 30%, increases durability in freeze-thaw cycles, and a reduction of the water to cement ratio.

ULTRA 5X:

By way of specialized sizers on basalt fibers and Biocene®, “graphene” silica fume, along with other nanoparticles increases the compression, shrinkage, workability, strength, and acts as a corrosion inhibitor that increases the overall strength of the design mix by 150%.

ULTRA 10X:

By way of specialized sizers on basalt fibers and Biocene®, and with increased graphene silica fume (including our proprietary Lavainfinite®), along with other nanoparticles increases the compression, shrinkage, workability, strength, and acts as a corrosion inhibitor. In addition, this increases the overall strength of the design mix to attain a minimum ASTM standard for “UHPC.”

*For Ultra-High-Performance mix, please contact us for additional design specifications

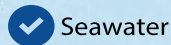
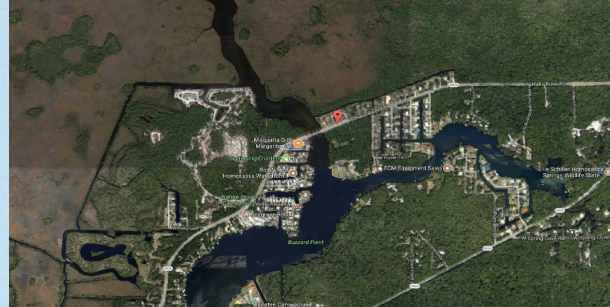
COST SAVINGS AT EVERY LEVEL

SEAMIX® VS. TRADITIONAL CONCRETE

<p>LESS CONCRETE REQUIRED</p> <p>When combined with SeaMix®</p>	<p>SHORTER CONSTRUCTION TIME</p> <p>Due to drastically improved cure times</p>	<p>LOWER CEMENT COSTS</p> <p>Eliminating chloride content limits</p>
<p>LOWER COST ALTERNATIVE TO AGGREGATES</p> <p>Using recycled or contaminated aggregates</p>	<p>REDUCED MANUFACTURING CARBON FOOTPRINT</p> <p>Resulting in monetizable carbon credits</p>	<p>FRESH WATER CONSERVATION</p> <p>Using salt water or other non-potable sources</p>

SEAMIX® USE

In combination with non-corrosive BFRP, SeaMix®, with sustainable properties, strength, durability, and high modulus elasticity, is ideal for tunnels, bridges, seawalls, tall buildings, parking garages, etc.



Seawater



Recycled concrete



Recycled asphalt pavement



**Office: 717 Ponce de Leon Blvd. Suite 309A
Coral Gables, FL 33134**
Phone: 305-218-1733
**Email: rrubio@mepworldgroup.com
jdargenio@mepworldgroup.com**

AVCP: System of systems of assessment and verification of constancy of performance (AVCP) of the construction product as set out in TAS105 ASTM C94, ACI 318, TAS 105A, ASTM C94, ACI 318, TAS 105A, ASTM C94

Ecology, Health and Safety Information (REACH)

For information and advice on the safe handling, storage and disposal of chemical products, users shall refer to the most recent Material Safety Data Sheet (MSDS) containing physical, ecological, toxicological and other safety related data.

Legal note:

This information is given in good faith based on SeaMix® current knowledge and experience of the products when properly stored, handled and applied under normal conditions in accordance with Seamix recommendations. In practice, the differences in materials, substrates and actual site conditions are such that no warranty in respect of merchantability or of fitness for a particular purpose, nor any liability arising out of any legal relationship whatsoever, can be inferred either from this information, or from any written recommendations, or from any other advice offered. The user of the product must test the product's suitability for the intended application and purpose. SeaMix® reserves the right to change the properties of its products. The proprietary rights of third parties must be observed. All orders are accepted subject to our current terms of sale and delivery. Users must always refer to the most recent issue of the local Product Data Sheet for the product concerned, copies of which will be supplied on request.



SEAMIX